

CCTV Camera Accessory



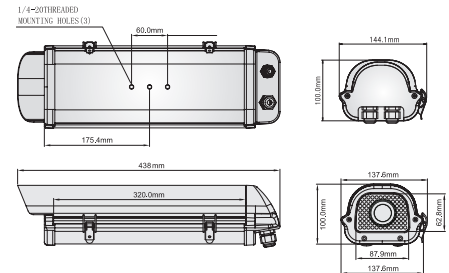
GMB-100EX

GMB-100EXFH

GMB-100EX/100EXFH

- | Outdoor Housing
- | 12" Inner Length
- | IP 55 Rating
- | Built-in Fan/Heater GMB-100EXFH Only
- | Simple Cap type end for easy installation & services
- | Long lifespan against UV exposure
- | Side opening type with two latches
- | Operation Temperature
 - GMB-100EX : 14°F~104°F (-10°C~40°C)
 - GMB-100EXFH : -31°F~122°F (-35°C~50°C)
- | Material : Aluminum, ABS

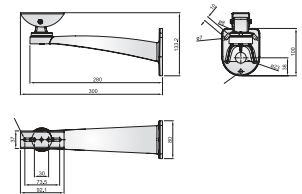
DIMENSION(UNIT:mm)



GMB-100W

- | Wall Mount Bracket
- | Outdoor/Indoor Application
- | Adjustable swivel head
- | Maximum loading up to 15Kg
- | Tilt adjustable : ±85°
- | Material: Aluminum

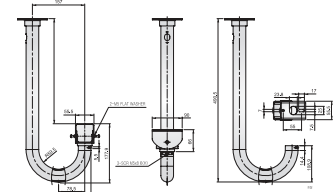
DIMENSION(UNIT:mm)



GMB-100C

- | Ceiling Mount Bracket
- | Outdoor/Indoor Application
- | Adjustable swivel head
- | Maximum loading up to 15Kg
- | Tilt adjustable : ±85°
- | Material: Aluminum

DIMENSION(UNIT:mm)



C/CS Mount Lens



- | 1/3" Image Device
- | 2.8-8mm Focal Length
- | X2.8 Zoom Ratio
- | Auto Iris(DC)
- | Iris Range : F0.95 ~ T360



- | 1/3" Image Device
- | 2.7-13.5mm Focal Length
- | X5 Zoom Ratio
- | Day&Night
- | Auto Iris(DC)
- | Iris Range : F1.3 ~ T360



- | 1/3" Image Device
- | 5-50mm Focal Length
- | X10 Zoom Ratio
- | Auto Iris(DC)
- | Iris Range: F1.3 ~ T360

Mega Pixel C/CS Mount Lens



- | 3Mega Pixel
- | 1/3"/1'4" Image Device
- | 2.8-8mm Focal Length
- | X2.8 Zoom Ratio
- | Auto Iris(DC)
- | Iris Range : F1.2 ~ T360



- | 3Mega Pixel
- | 1/3"/1'4" Image Device
- | 15-50mm Focal Length
- | X3.3 Zoom Ratio
- | Auto Iris(DC)
- | Iris Range : F1.5 ~ T360



- | 1.3Mega Pixel
- | 1/3"/1'4" Image Device
- | 5-50mm Focal Length
- | X10 Zoom Ratio
- | Day&Night
- | Auto Iris(DC)
- | Iris Range : F1.6 ~ T360